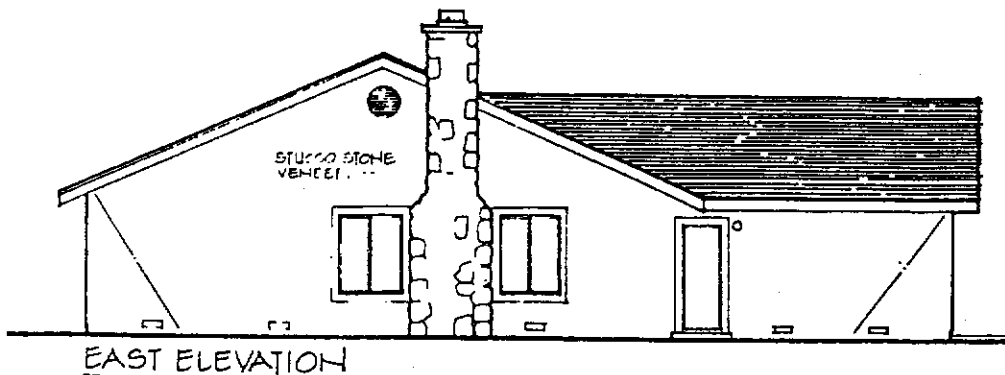
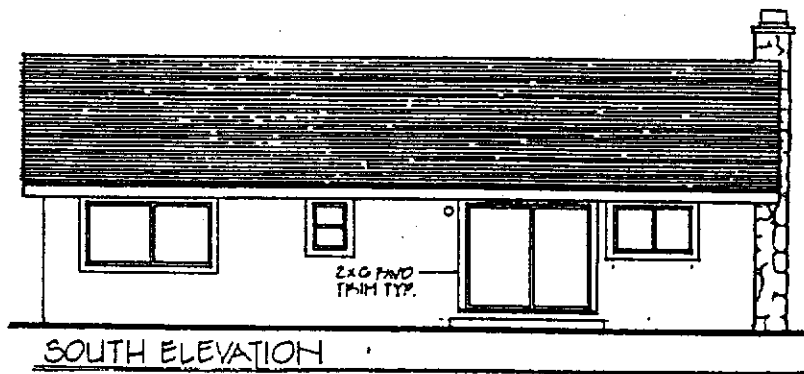
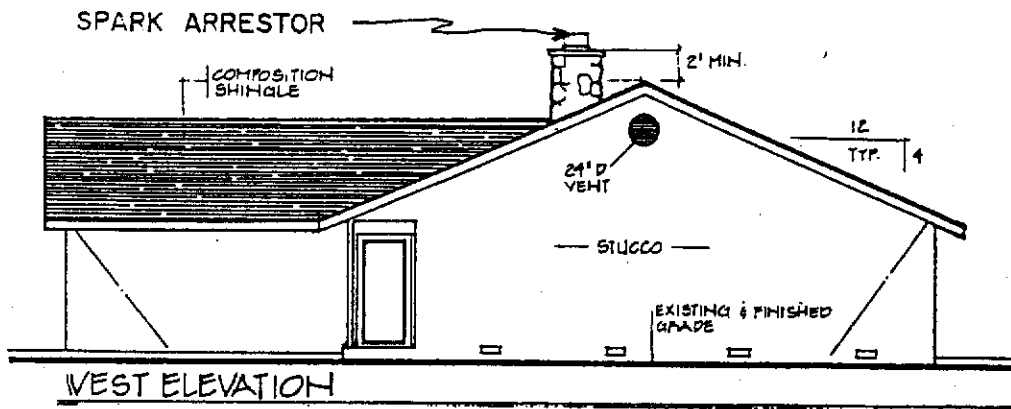
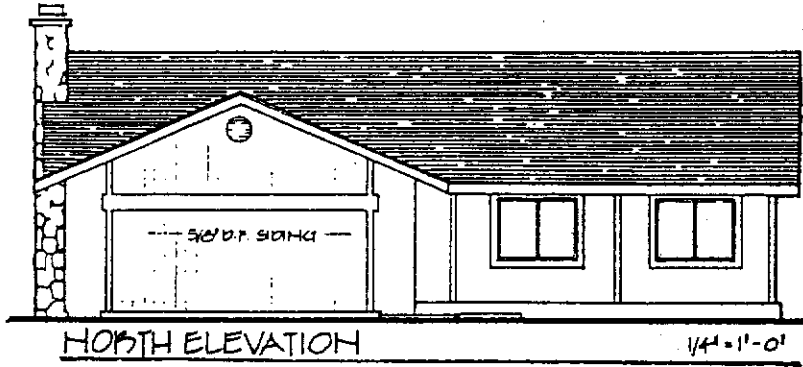


D

CHECK LIST FOR EXTERIOR ELEVATIONS - 1/4"=1'-0"

- Provide a minimum of 3 elevation views showing all openings
- Indicate wall finish material
- Indicate roof material and pitch
- Show original and finish grade
- Show stepped footing outline

➤ THESE PLANS ARE PROVIDED AS A GUIDE TO PLAN REQUIREMENTS AND IN NO WAY EXPRESS CODE REQUIREMENTS OR MINIMUM BUILDING STANDARDS.



*a. signature*